



WE ARE
Ngāi Tahu



Te Rūnanga o NGĀI TAHU



Donald Harman - SharePoint Administrator / DBA

Te Rūnanga o Ngāi Tahu

Te Uru Kahikatea

Business Information Services

@donaldharman

donald.harman@ngaitahu.iwi.nz

Ensconsed in a SharePoint since 2003

Dorje McKinnon – Workshop facilitator – Stats guide

dorje@varja.co.nz

Kylie Richardson - Search Styling

kylie@thenewblack.co.nz

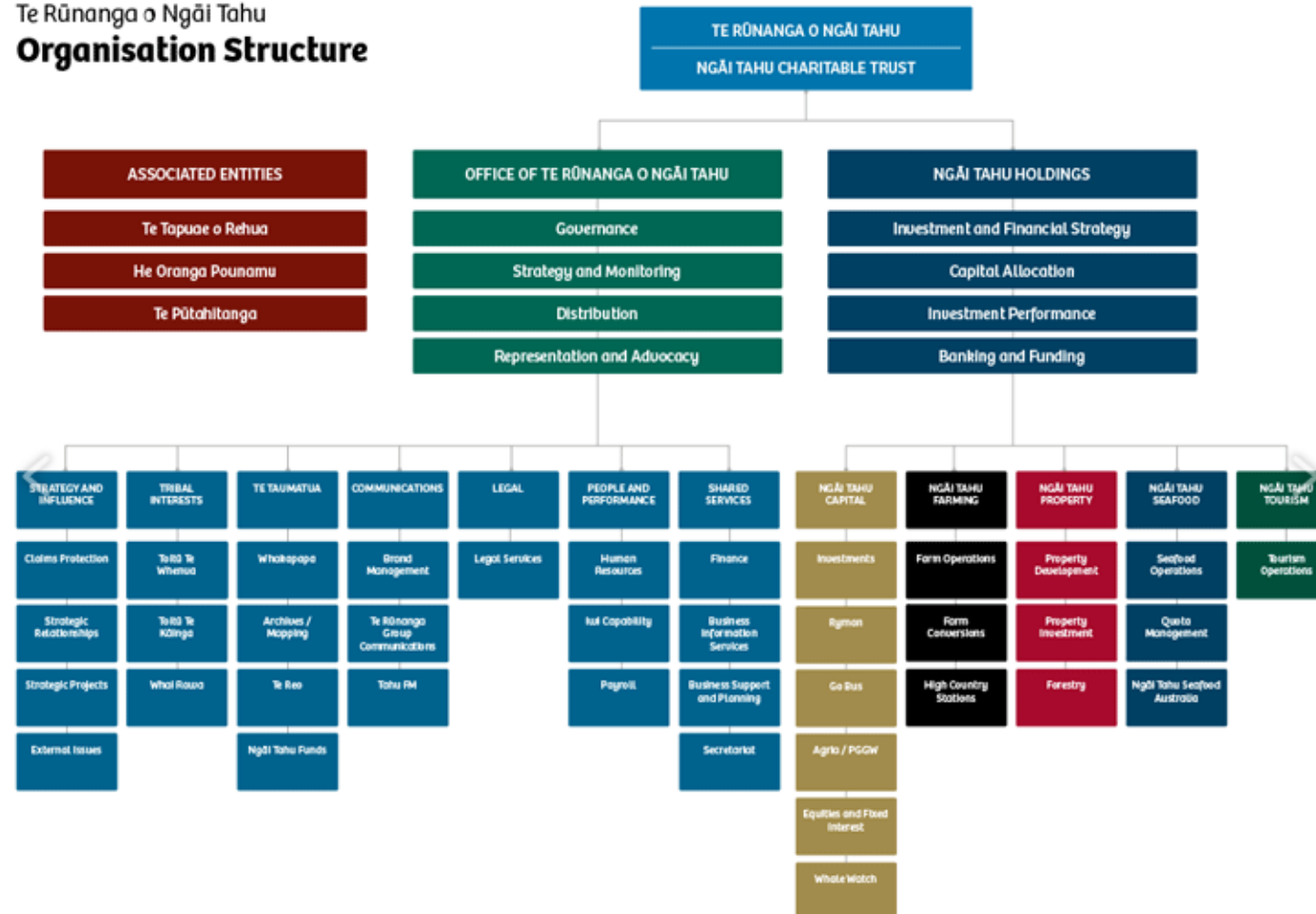
Ali.Duncan – Branding

ali@stp.co.nz

Sponsored by Senior Management and guided by Warwick Hutchins CTO

Te Rūnanga o Ngāi Tahu (Te Rūnanga), the tribal council, was established by the Te Rūnanga o Ngāi Tahu Act 1996 to be the tribal servant, protecting and advancing the collective interests of the iwi. **Mō tātou, ā, mō kā uri ā muri ake nei – for us and our children after us.**

Te Rūnanga o Ngāi Tahu Organisation Structure



Pihanga The Journey

- What's come before
- Provide a new cohesive Intranet
- Culture changing?


Ko Tahu
KO AU

Our values define
our past and
shape our future.



Te Rūnanga o NGĀI TAHU

- Verision 1



Te Rūnanga o Ngāi Tahu


Home

Helpdesk

Phone List

Shop

Links



ONLINE HELP

The Helpdesk operates between the hours of
8:30am and 5pm during weekdays.

For assistance please call x3206 or send an email to "helpdesk"
For external calls, please phone 0800 58 57 56

[How can I access the Internet \(World Wide Web\) ?](#)

[How can I use Ngai Tahu Word templates ?](#)

[How can I connect to network printers using Windows 95/98 ?](#)

[How can I connect to network printers using Windows NT ?](#)



• http://intranet

Te Rūnanga Group Ipuraki ā-Tari - Intranet

Welcome Donald Harman

Te Rūnanga o Ngāi Tahu

Home | Tourism | IT Service Desk | CEO | Pathway Training | My Apps

View All Site Content

Documents

He whakamārama ~ Working Here

Facilities Maintenance

Finance Information

Forms

He angitu ~ Employment Opportunities

Health & Safety

Policies & Procedures

Employee Interests Register

Seafood Spreadsheets

Intranet Sites

Governance

OTRoNT home page

Property home page

Tourism home page

Tiaki Taiao

Hunga whakapā ~ Contact Lists

Org. Charts

NT Seafood Tāngata

NTHC Tāngata

Papatipu Rūnanga Contacts

Papatipu Rūnanga location map

Property Tāngata

Rūnanga Reps

Taurahere Rōpū contacts

TRoNT Office Tāngata

He rauemi ~ Resources

User guides

News and Media

Useful web sites

Business & Facilities Support

Intranet A-Z

FlexiPurchase P-Card

BIS

Mā Tātou Self Service

People and Performance

Phone Administration

Te Rūnanga Pānui ~ Noticeboard

>

Title

Benthic Algae Ashley at Rangiora Loburn Bridge

Tū Toka Tū Ariki 25th Anniversary Easter Wānanga Registration Forms

Taiaha Wānanga

Add new announcement

News Clippings

Clippings date

Name

Articles

25/02/2014

25-02-14 Gravel Extraction_Tahu Potiki_Dairy Industry Awards_Historic Sketch

Gravel Extraction; Tahu Potiki; Dairy Industry Awards; Historic Sketch

23/02/2014

23-02-14 Chch City Vision_Jim Guthrie_Red-zone Tour_Ngapuhi Settlement_Treaty Settlements

Chch City Vision; Jim Guthrie; Red-Zone Tour; Ngapuhi Settlement; Treaty Settlements

22/02/2014

22-02-14 Treaty Settlements x2_Poupou

Treaty Settlements x2; Poupou

21/02/2014

21-02-14 Te Matatini_Native Plantings_Ngapuhi Settlement x2_Land and Water Regional Plan

Te Matatini; Native Plantings; Ngapuhi Settlement x2; Land and Water Regional Plan

20/02/2014

20-02-14 Gold Dredging_Wairarapa Maori Chieftain_Te Ana Rock Art Centre_Ngapuhi Settlement x2_Memorial Service

Gold Dredging; Wairarapa Maori Chieftain; Te Ana Rock Art Centre; Ngapuhi Settlement x2; Memorial Service

1 - 5

Hokohoko - Market Place

New

Actions

Settings

Title

There are no items to show in this view of the "Hokohoko - Market Place" list. To create a new item, click "New" above.

Ngāi Tahu related public web sites

Ko te Rātū,
25 o Kahuru, i te tau 2014

Google

Staff Search

First Name:

Last Name:

Search

Enter all or part of a name
e.g. A will find all names beginning with A

Te Rātaka ~ What's on Calendar

February 2014

Mon Tue Wed Thu Fri Sat Sun

27 28 29 30 31 1 2

3 4 5 6 7 8 9

10 11 12 13 14 15 16

17 18 19 20 21 22 23

24 25 26 27 28 1 2

3 4 5 6 7 8 9

Upcoming events

Event

Start date

There are no items to show in this view of the "Te Rātaka ~ What's on Calendar" list. To create a new item, click "New" above.

Add new event

Kai waho (i te whare) ~ Away today

Person

Returns

Fiona McLeod

15/03/2014

Add new announcement

He angitu ~ Employment Opportunities

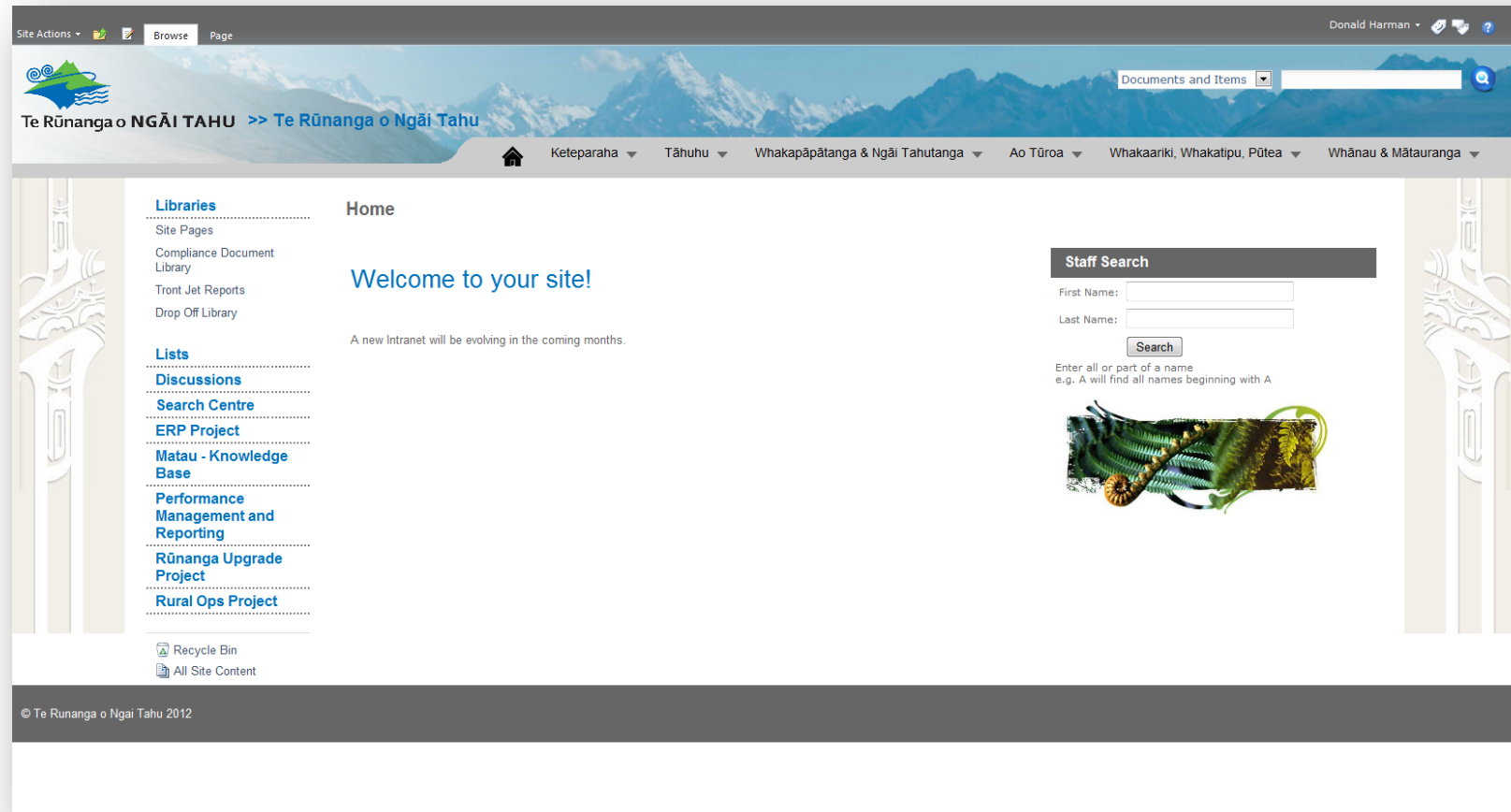
Job title

Closing date

Employer

There are no items to show in this view of the "He angitu ~ Employment Opportunities" list. To create a new item, click "New" above.

The Intranet – Version (to be)



On prem to cloud

**the fast moving cloud and the
alignment to the slow moving
corporate beast**



Next steps

- Provenance
- Tagging
- Upcycling
- A name with story

Ko Tahu
KO AU

“Ekea kā tiritiri o te
moana... Ascend to
the heights of your
aspiration.”



Te Rūnanga o NGĀI TAHU

Changing

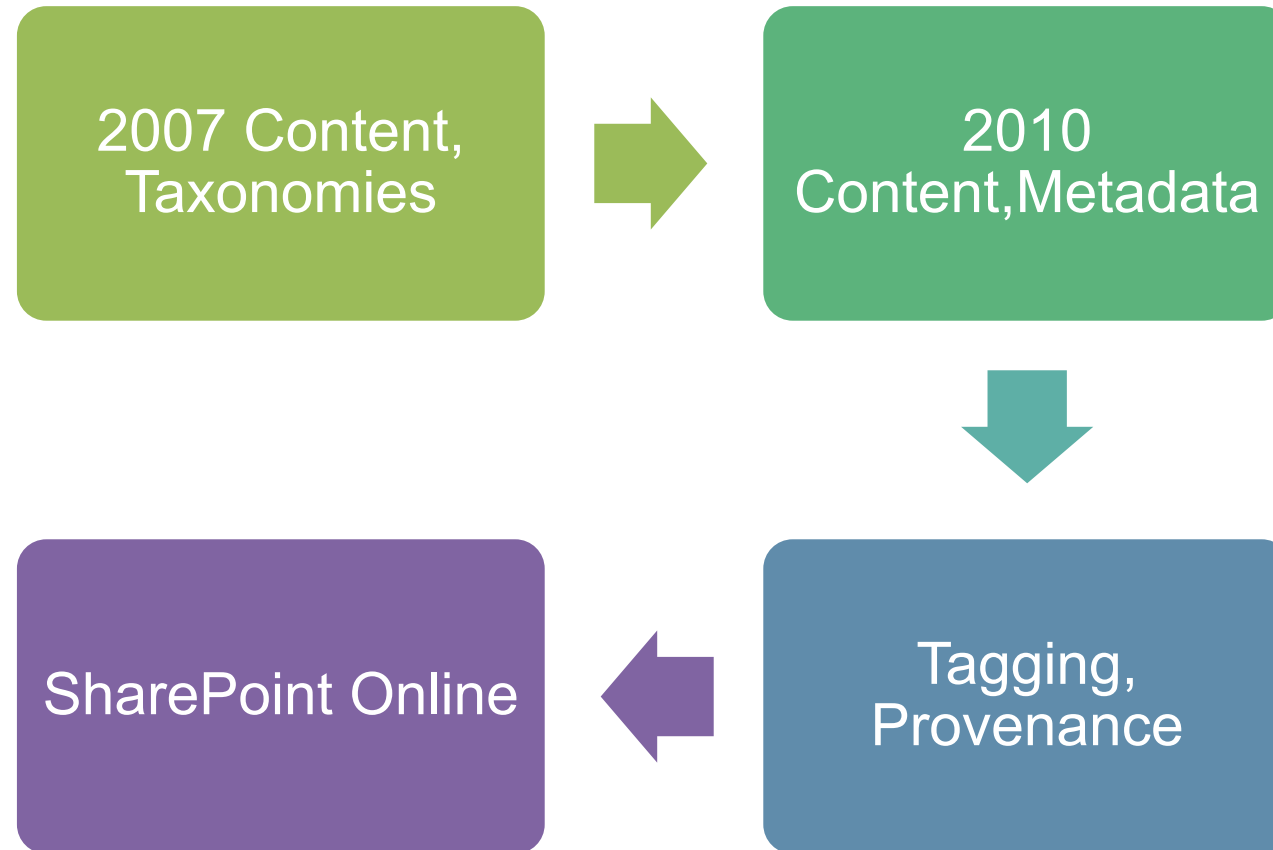
Taitara - Job Title *	<input type="text" value="SharePoint SME"/>
Whakahaere - Entrance	<input type="text" value="oTront"/>
Kaitiaki - Guardian, minder over natural resources	<input type="text" value="Shared Services"/>
Tari - Department *	<input type="text" value="Business Information Services"/>
Momo mahi - Employment type	<input type="text" value="Permanent"/>

FACT = Wh A K T = Provenance

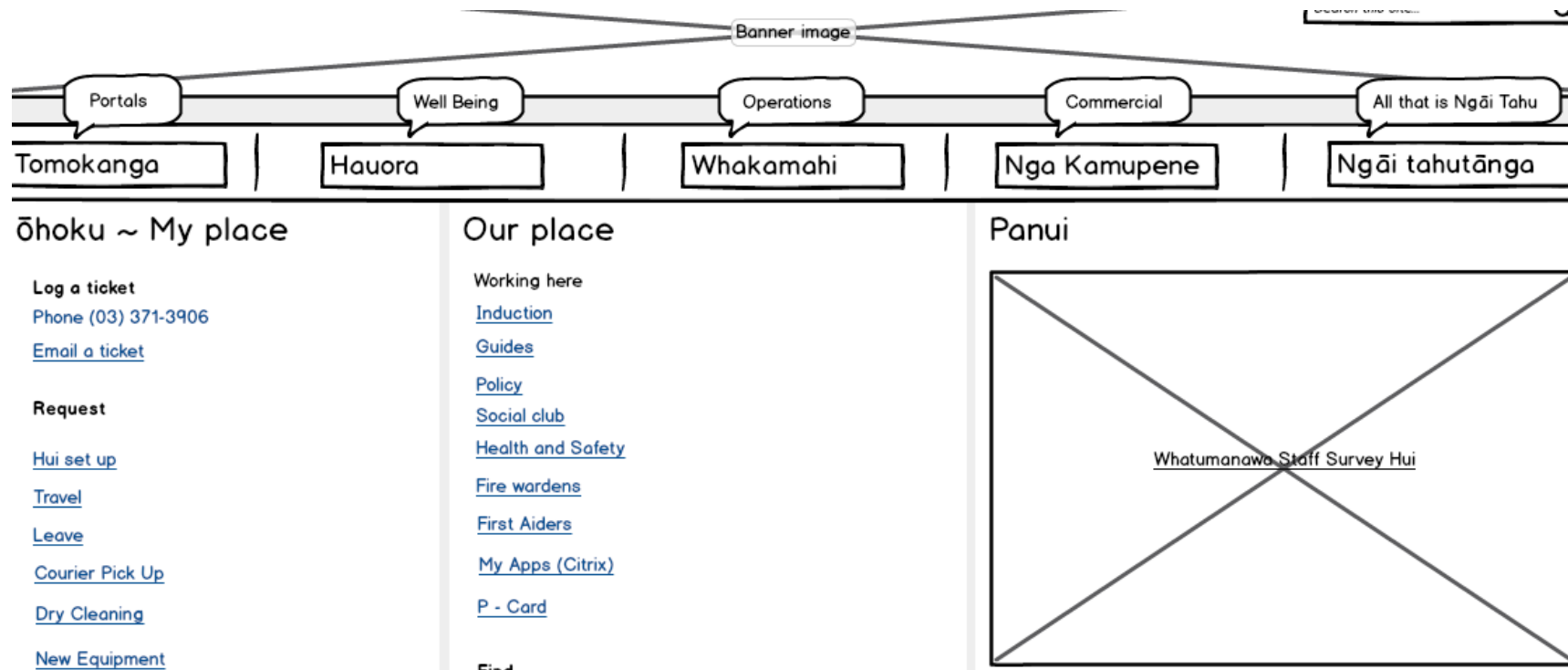
- FFAS to FACT to **Wh A K T**
 - **Whakahaere** - Te Rūnanga o Ngāi Tahu
 - **Apure** - Te Uru Kahikatea
 - **Kaitiaki** - Shared Services
 - **Tari** – Business Information Service



Migration



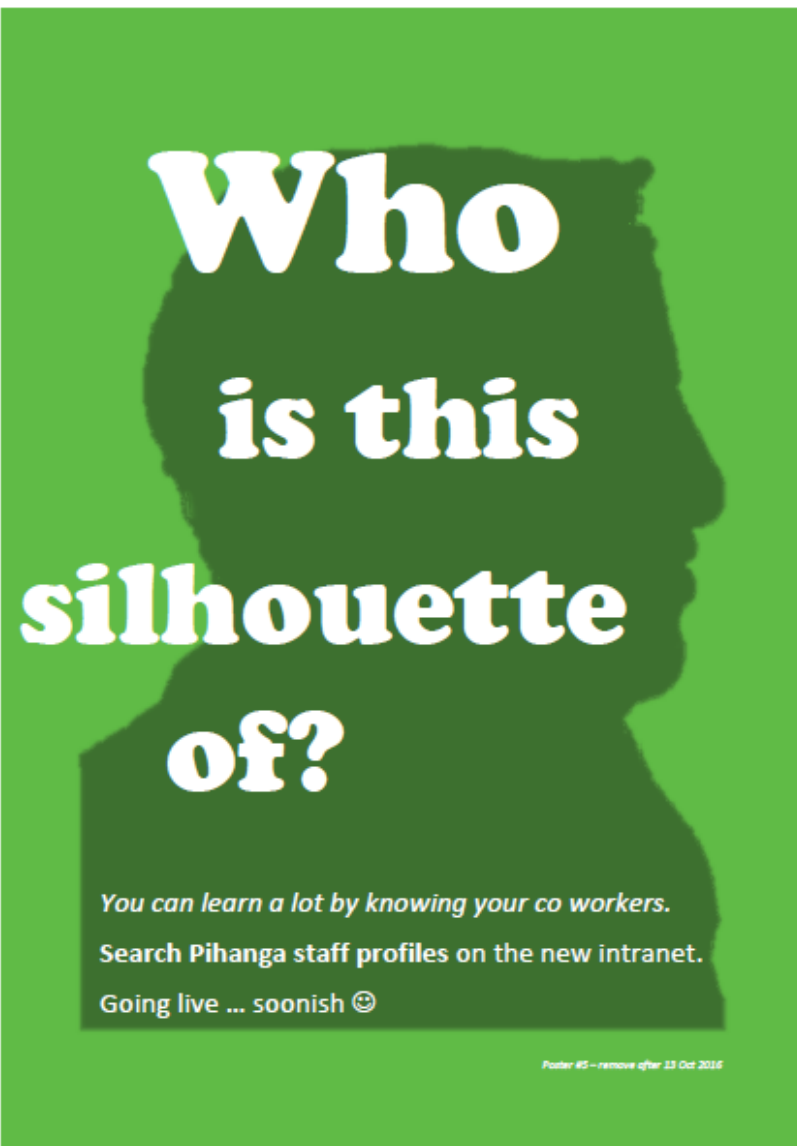
Card sorting workshops





(noun) window, sliding slab of the traditional window of a *wharenuī*.





Pihanga - a window into our wharenui.

The screenshot shows the Pihanga SharePoint site interface. The top navigation bar includes 'Office 365', 'SharePoint', a user profile for Donald Harman, and icons for notifications, settings, and help. The main content area is divided into three columns:

- Tōhoku Wāhi ~ My Place:** A red header bar with the text 'E hiahia ana ahau ki te ~ I want to'. Below it, a list of links includes: Report an Incident, Hazard or Near Miss; Anti Money Laundering Form; Arrange Travel; Expense Claim; Piki ake; Apply for leave; On-Board New Staff; Order business cards; Order Coffee; Organise Hui Catering; Pātaka Kai; P-Card; Request Equipment; Update my Profile; Who's on Location - Pre-register manuhiri; and more....
- (kā) mahi a kā tumu ~ Manager tasks:** A red header bar. Below it, a list of links includes: P-Card; Approve Leave; Expense Claim; and Leaving Staff - Your Guide.
- Tō Tātou Whare ~ Our Place:** A red header bar with the text 'Seafood Pages'. Below it, a list of links includes: Seafood Home; Seafood Spreadsheets; Health and Safety Info; Tomokanga ~ Portals , Sites; Governance Page; Rūnanga Portal; ...more; (Kā) kaupapa ~ Projects; Intranet Refresh Project; Whakapai Tuarua; Whakaaturia mai ~ Show me; A staff member; Rūnanga Contact Page; My Apps; Organisation Charts; Policies; and Te Reo.
- Pānui ~ Notices:** A red header bar with the text 'Te Puna Kōrero ~ The spring of many voices'. Below it, a large banner for 'Happy Star Wars Day!' features two Star Wars characters holding lightsabers. Below the banner, there are four smaller images with captions: 'Have you RSVP'd?', 'Happy Star Wars Day whānau!', 'Hui Whakawhanaungatanga - April 10', and 'Pre register your manuhiri'. At the bottom, a red header bar for 'Te Rūnanga Pānui ~ Noticeboard' includes a '+ new announcement' button and two announcements: 'Health warning lifted for Te Roto O Wairewa/ Lake Forsyth - May 10, 2019' and 'Te Rūnanga o Ngāi Tahu Artworks & Taonga Collection'.



Post live

- “everything I need is on the homepage”
- Oops got some of it wrong
- Waiaata page is being used
- maunga and awa to Runanga Page
- Tront Hui – Pihanga being quoted
- Search is being, user profiles

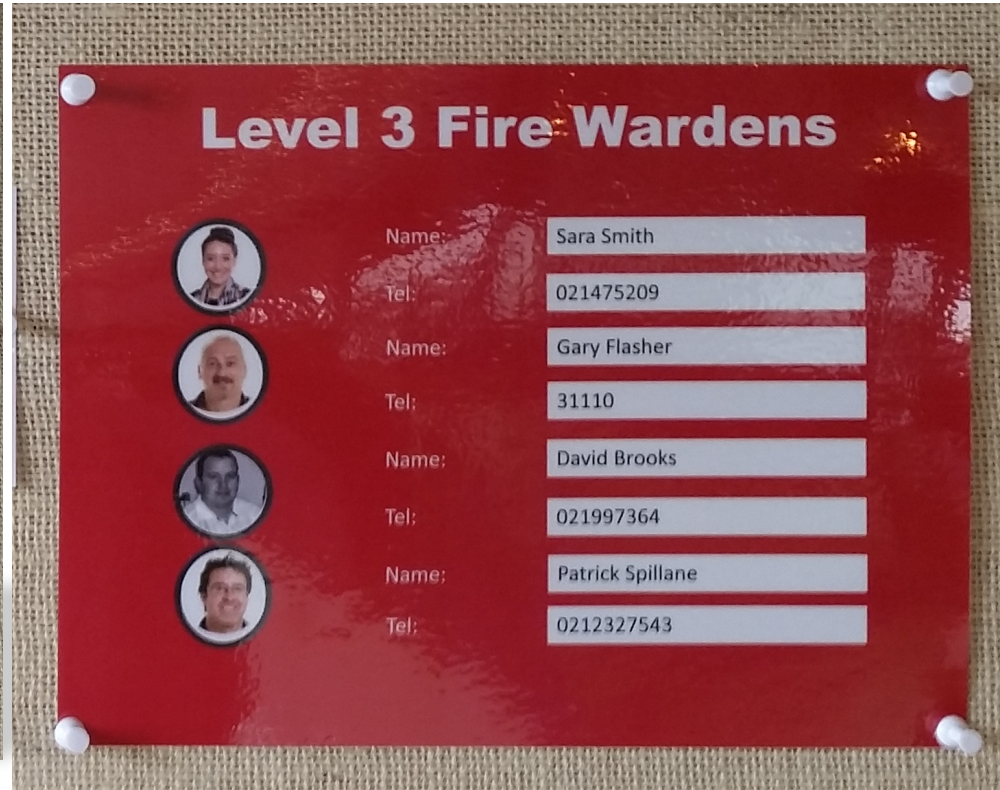
Ko Tahu
KO AU

Our values define
our past and
shape our future.

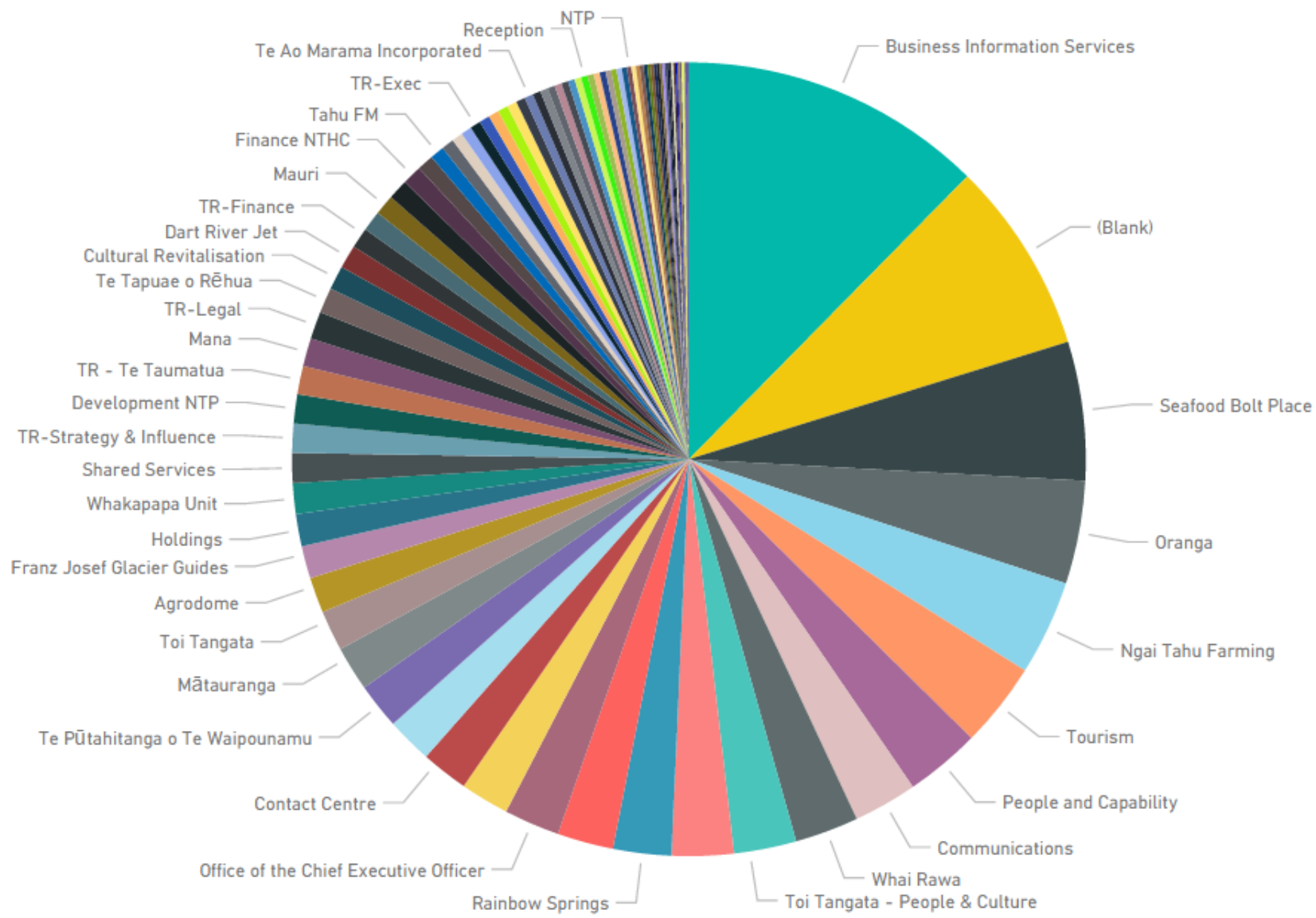


Te Rūnanga o NGĀI TAHU

People are using stuff



Page visits by deparment - all time



Future – Take a breath and carry on

- Digital Workspaces – or Workplaces
- Cultural and business needs
- Office 365 and change management
- Records Management – how does all this align for that

Ko Tahu
KO AU

Our values define
our past and
shape our future.



Te Rūnanga o NGĀI TAHU



Ko Tahu KO AU

Our values define
our past and
shape our future.

Ngā mihi Donald Harman
@DonaldHarman

SharePoint Admin / DBA
Te Rūnanga o Ngāi Tahu